

**NIGEL WESTAWAY  
& Associates**

**The Environment Council**

environmental facilitation  
and conflict resolution

e-mail: [nwestaway@compuserve.com](mailto:nwestaway@compuserve.com)

# **CRYSTAL PALACE PARK**

## **Record of the Main Group Meeting**

**Saturday 24<sup>th</sup> September 2005**

Please use The Environment Council details below as your first point of contact

212 High Holborn  
London WC1V 7BF

tel 020 7836 2626

fax 020 7242 1180

email [info@envcouncil.org.uk](mailto:info@envcouncil.org.uk)

[www.the-environment-council.org.uk](http://www.the-environment-council.org.uk)

Registered Charity Number 294075 Certificate of Incorporation Number 2004003 VAT Number 577 8121 11

## INTRODUCTORY NOTE

***The meeting was facilitated by Nigel Westaway & Associates and The Environment Council. This report is a typed transcript of the flipchart record written (in open view of all the participants) during the meeting.***

***To make the record more intelligible, some explanatory notes have since been added by the facilitator. These are shown in bold italics. All other wording is as agreed by participants on the day, apart from minor grammatical corrections and clarifications.***

***Comments recorded are made by individuals and these views are not necessarily shared by other participants.***

***Agreements reached by the whole group are boxed like this.***

***Because the record is inevitably cryptic in places, it is recommended that it should not be used to brief people who did not attend the meeting without a full explanation from a participant.***

## **CONTENTS**

ATTENDEES .....	3
OBJECTIVES.....	4
AGENDA.....	4
DIALOGUE GROUND RULES .....	5
INDEPENDENCE OF FACILITATION .....	5
NEWCOMERS.....	5
TRAMLINK.....	5
CPCA .....	5
TASK GROUP – CONFIDENTIAL ITEMS .....	6
CP CORNER UPDATE.....	6
TG UPDATE .....	7
PARK ISSUES.....	7
TIMETABLE.....	10
MUSEUM .....	10
PARK MANAGEMENT – OPTIONS .....	11
PUBLIC CONSULTATION.....	11
PRESS RELEASE .....	11
SMALL-SCALE IMPROVEMENTS .....	13
ACTIONS .....	14

## ATTENDEES

Nigel Westaway	NWA
Rhuari Bennett	The Environment Council
Schia Mitchell	NWA
Claire Melier	The Environment Council
Sarah Graham	The Environment Council
Jo Gibbons	J&L Gibbons
Jon Dickinson	
Karen Moran	Bromley Green Party
Ken Thomas	NSC User
Anthony Kewdall	Ruach Ministers Christian Centre
Alan Munday	Streatham Society / Croydon Society
Joyce Bellamy	Metropolitan Public Gardens Association
Alan Trembleau	
Pat Palmer	CPCDT
John Canvin	C.P Councillor Bromley
John Bellerby	CPCA Resident
Rosemarie Falaiye	CPCA Resident
Senaka Weeraman	Resident
John Prideaux	Resident
Doris Gadsby	Boycott UCI
Sue Nagle	Triangle Traders
Janice Hardy	Resident
Storm Poorun	Resident
Julia Farr	Green Party / Olan Trust
Virginia James	Bromley Forum of Older People
Lilee Hardysin	
Laurie Hardysin	
Craig Richardson	Friends of Crystal Palace Park
Alan Freeman	West Beckenham Residents Assoc.
Nick Goy	Local Resident
Paul Hudson	Local Resident + members of CPCA
Richard Francis	Friend of Crystal Palace Park and local resident
Stephanie and Jim Lodge	Friends of the Earth Southwark
James Slattery-Kavanagh	Crystal Palace and Upper Norwood Chamber of Commerce
Pierce Buckley	
Peter Austin	Norwood Society
Leo Held	Norwood Society
Jane Moore	Norwood Society
Vivien Day	Crystal Palace Campaign
Lee Hosking	Arup
Peter Hore	Office of Tessa Jowell MP
Nigel Hawkins	Local resident
Melvyn Harrison	CPF
Mark Dunsdon	Local resident
Anita Dyson	Local resident
Ian Payne	Cllr. LBC
Barry Kidson	Resident
Roger Sorell	Journalist
John Greatrex	PCPCP
Sharon Baldwin	Town Centre Manager
Ken Lewington	Crystal Palace Foundation
Ray Sacks	Crystal Palace Campaign
Ruth Locke	Sydenham Society
Pat Trembath	Sydenham Society
Ellena Rushbrook	Resident

Theresa Conolly	Friends of the Earth Southwark
Sue Wardman	Friends of Crystal Palace Park
Ray Hall	PPI
Julian Meldrum	Saxon Crown SC London Region ASA
Philip Goddard	Norwood Society
Abdel Ouhla	WWF
Fraser Lowe	Local resident
Irene Baker-Hunt	
Stephen Sin	Local resident

## Apologies

- Malcolm Wood, English Heritage
- Doreen Heath, Lambethan's Society
- Andy Sacha, Sport England
- Darren Johnson, London Assembly
- Jim Williams
- Iain Killingbeck, LDA
- Roger Frith, LDA
- Gary Wasniewski, Tyga Martial Arts

***Although CPCA had already withdrawn from the dialogue by the time of this meeting, a number of CPCA members were present. In the interest of maintaining constructive dialogue, this is welcomed by the facilitators.***

## OBJECTIVES

- To inform dialogue members of the work of the LDA + Task Group since May
- To review the current range of proposals + options as the basis for the October consultation
- To consider priorities for immediate improvements to the park
- To agree a way forward for the dialogue process

## AGENDA

- 9.30 Introductions, agenda, ground rules  
 Actions form May meeting  
 Updates: Tramlink, CPCA, TG  
 Park vision + principles  
 Park proposals  
 Immediate improvements
- 11.10 BREAK  
 Queries on presentations  
 Peripheral development options  
 Small group discussion of presentations / full meeting review
- 1:00 LUNCH
- 1.45 Timescale for work  
 CP museum  
 Park management options  
 Public consultation  
 Future dialogue  
 Dates + actions
- 3:00 CLOSE + evaluation

## **DIALOGUE GROUND RULES**

*(as agreed in previous meetings)*

- No smoking in the building
- No food / drink outside dining room
- Mobiles off
- One person speaks at a time
- Come back at agreed times
- Respectful behaviour
- No audio / visual recording in meeting
- Stick to the agreed objectives + agenda
- Watch the wall record. Tell us if it is wrong
- Joint press statement at end, if appropriate

## **INDEPENDENCE OF FACILITATION**

- To what extent is the facilitator really independent? Is there a contract between them and LDA? Needs to be open and transparent
- Yes, Nigel Westaway does have a contract with LDA but this requires him to work on behalf of all stakeholders
- The facilitators offer 3 things to demonstrate independence:
  - Won't offer a view on the content of the discussion (i.e. what should happen in the park)
  - Open, shared wall recording – will be corrected in full view of meeting, if necessary
  - Will try to give everyone equal opportunity to speak
- Many people feel that facilitation is very professional, but it is a fair question... we all need to know that it is fair + independent
- Facilitator watches his relationship with LDA closely – has sometimes had to tackle this with LDA and sometimes makes process decisions that even LDA doesn't like
- Carey withdrew as was exhausted by this process
- Important for people to know how Nigel (+ The Environment Council is paid). Has been public knowledge since LDA became involved.

*(This issue has been discussed at greater length in previous meetings.)*

## **NEWCOMERS**

- People who haven't attended before... please hold your questions until later so we don't cover old ground (as agreed last time)
- Need to know who they are though

## **TRAMLINK**

- Public consultation on this next year

## **CPCA**

***CPCA's letter of withdrawal is attached to this report, as are the replies from TEC & NWA.***

- Withdrew from dialogue in August
- Concerns over confidentiality agreements in the dialogue – hard to update own members

- Not happy about the plans for development... Seems like it's all decided without consultation
  - Will find out today
- Unhappy with the agreement on representation in the Task Group
  - Task Group members not only representing the organisation they come from – also working on behalf of all interest groups
- Feel that the consultation is probably a paper exercise, justifying the decisions already taken
- Katrina happy to discuss representation with CPCA members today
- NWA/TEC/LDA has offered a special meeting for ordinary CPCA members to discuss the dialogue. Also asked for this invitation to be brought to members' attention. Those in the room not aware of this.

## **TASK GROUP – CONFIDENTIAL ITEMS**

***The facilitator displayed the following list of items that had been discussed in confidence at Task Group meetings and pointed out that, in line with the agreed TG ground rules, all these had been openly discussed at the earliest following Main Group meeting.***

### **April – May Meetings**

- Possible re-sitting of caravan club
- Proposal to demolish NSC + associated costs
- Glazed escarpment idea

(all discussed in May MG meeting)

### **May – September Meetings**

- Peripheral development options
- Immediate capital improvements

(both items on agenda for this meeting)

### **Comments**

- One person does not feel that it was right to discuss Rockhills possibilities before sharing with caravan club
- Most people understand the reasons for confidentiality
  - But still discomfort on this later in a small group discussion
- TG members' focus was not lobbying for their own favourite proposal, but generating a list proposals/options covering known needs of views of wider public + organisations.
- Danger of losing sight of what's really at stake here: we need to discuss the park and its future
- Nothing in a main group is confidential
- Communications
  - All MG reports are/will be on LDA website
  - All MG reports sent out to whole mailing list of 250 people
- Feels like there are people that are becoming less happy with consultation plans, BUT others want to move on!

## **CP CORNER UPDATE**

- Planning application for CP Corner project on the topline to be renewed
  - MG happy to support this

## TG UPDATE

***Peter Austin & Pat Trembath gave brief addresses about the recent work of the Task Group.***

### Comments

- Want to hear more about the TG work... will hear more on this later
- Scaremongering in community hasn't helped... the TG aren't taking decisions on other people's behalf

## PARK ISSUES

***Members of the LDA team gave a series of presentations. The text slides from these are attached to this report.***

### Responses to General Park Proposals

- Will hear more about hilltop options later
- Houses won't be demolished as part of the improvements
- Sustainability principles / practice will be used for all work
- Zero-carbon / energy balance
- Reservoir: thoughts about a skate park possibility
- Station approach: can we hear more
- Rail services and connectivity: make sure services are appropriate in scale
- Glazed escarpment idea not being progressed as no suitable uses for the building had emerged
- Lots of support for TG work...big thank you
- Young people: facilities under consideration
- Pathways: links to other paths externally as well as circuits internally...surfaces need to be right
- Habitat protection: LDA just completed a survey on biodiversity, just starting a bird nesting map
- Use of materials from demolished facilities: how will they be used sustainably? Would look to re-use where possible and minimise wastage
- Caravan park potentially to move to 1 or 2 sites either locally or near Olympics
- Skate/BMX park planned for nearby, not by LDA
- Employment generation: not effective if it's a 1-off
  - Long term regeneration required
- Teenagers / youth feel disenfranchised
  - Vandalism is one result of this
  - There is a stream of youth consultation ongoing + more planned
- Security: role/nature of rangers is really important
  - New headquarters is key here
- Consultation with ethnic minority groups should be better
- (Important to emphasise fun youth activities on option plans e.g. skateboarding, adventure play. Currently options appear only to cater for younger children / passive / educational activities)

### Responses to Development Options

- What's blue rectangle near Norwood triangle gate on the map?
  - It's a subway entrance, only 1 storey high
- Norwood gate residential development would be roughly same height as surrounding buildings
- Long blue shape on map could be a rest area for bus drivers (don't they already have one?)

- Must be accurate about park boundaries
  - Don't judge whether it's nice or not – just need to decide if the option should go into public consultation
- Any new development to have disabled access
- Current rangers offices aren't part of the "accessible" park although are within boundary
- Need to know more details before we can really respond
- Is it private housing being proposed? Or affordable / social?
  - Focus is on private housing to raise funding
- Residential developments will make car parking worse
- Can't the station be used for tram?
- Car parking at Norwood Gate would be for 120-150 places, plus what's needed for new residential
- Children's play areas: not looking to decrease this, although may have to relocate One o'clock club.
  - In fact, will increase provision
- Park erosion is an issue
- If these development options go ahead, would gain 25 acres of accessible park.
- Housing violates the "public park" principle... even though understand rationale
- Station improvements: benefits are not clear
- If changes to tube – will make things worse
- Funding: council tax rise and sale of houses: double-counting. Improvements will have no direct impact on council tax but council tax revaluation may put up council tax rates
- LDA doesn't own park: Bromley does
- Park has history of costing a huge amount of money (some people haven't noticed it though)
- LDA could have more ability to manage it in future
- Funding will have to come from a wide range of places
- Mayor sees park as a central part of South London
- Paxton built houses, why not do it now? Leasehold reverts to park once houses gone
- Triangle Gateway: bus station could move?
  - Difficult with bus routes to Anerley?
  - Could consider the idea though
- Could you make top floor of residential as the viewing platform?
- Housing has been discussed in MG meetings: principle agreed that private development wouldn't take place on hilltop
  - TG discussed this with LDA
- Ownership of park really important
- Mustn't allow park area to be chipped away at
- Difference between putting houses where they were bombed (i.e. replacement) and on new land
- Development proposed for "yellow" land under the Act
- Tramlink consultation – next year, so look out for it in a few months. Lots of options for it, no decisions made.

## **Gateway Ideas**

### Norwood Triangle residential building

- Most people think should go to consultation
- Some don't

Please maintain Norwood treeline - yes, building would be roughly same height

Norwood Triangle minus bus station

- Yes, go to consultation

Norwood Triangle Landscape (piazza etc)

- Nearly all think it should go to consultation

### Penge gate

- Most think should go to consultation
- One or two don't



## Rockhills

- Most think should go to consultation
- A few don't

Road crossings to Rockhills need improving for pedestrians

Yes, that is a real issue that LDA would need to look at

- In public consultation on the park options, it's important for the implications of the options to be spelt out, especially re: housing. Consultation must make the trade-offs clear e.g. car parking
- Options for funding must include Mayor paying for development, instead of via housing
- Congestion implications must be made clear
- Norwood entrance already clear
- Difference between main buildings and the ancillary buildings (ownership especially)
- What about a "lower intervention" set of options? Public consultations last year didn't really support this.
- Need the widest possible range of options for the public consultation
- It's not clear whether it's a pleasure park, or a normal park
- Traders already struggling for trade, so don't build more shops
- Yes, sounds sensible...it's a park and a community, not just a park
- Private space not to be developed on the hilltop. Most agree, some don't.
- Funding from GLA? This should be considered.

Broadly agree that all of these proposals + options should go to public consultation in October

- Are there other options that were considered that should also go to consultation? TG to look at this.
- Old clinic not having lease renewed
  - Should bear this in mind
- What about rebuilding crystal palace on top site?
  - Planning permission difficult, many people don't want building all along site

### **Issues for TG to consider**

- Moving bus station from Norwood Triangle
- Additional options (e.g., "rebuild Crystal Palace")
- Rockhills, but with less housing focus
- Public meeting to start the consultation
- Balance of narrowing / widening questions

### **Comments on post-it notes**

***As well as the open discussion recorded above, participants were given the opportunity to make additional comments on post-it notes after the meeting. These are shown below.***

- Friends of CPP only to be supported only if they are truly independent and not puppets of another organisations agenda.
- Conservation is also a valuable form of sustainable development and should be considered in the park's regeneration as a cultural heritage site.
- Concert platform: tongue-in-cheek: apply rust proof paint (suggestion) seriously: hide back & sides with trellis / creepers
- Penge gate: have a proper sign - naming park
- Museum area: remove green waste tip & piles of boats
- Dino area: is this accessible from Thicket road?

- Paths: repair cracks & puddle dips
- Favour small scale improvements and no commercialism
- As park user worried about erosion of green space. I'm not in favour with plans to build housing anywhere – perimeter included. It seems to me that there is a conflict with aim of providing more for young people + then building on areas which have been the one o'clock club + adventure playground.
- Any development will be subject to vandalism if ranger staffing continues to be cut back.
- Mobility cars for disabled
- Xmas ice-skating
- Where or what is conservation area near Penge Gate?
- Financial support from LDA for the pccpcp to encourage other groups and individuals to also assist
- Please include teenagers in proposals
- Farm - bring back the Flamingos
- Loss of adventure playground and BMX Track for housing only acceptable if other facilities for these age groups available
- All proposals, options and alternatives need to be critically discussed by the public not just by representatives, consultants and the like. They all have to be seen side by side and evaluated on merit.
- The public consultation needs to include the option of park expenditure not being funded by houses, shops, offices etc... but by general taxation (e.g. Mayor's precept). Also the flats etc by the bus terminus conflict with the tram route proposal.
- Must retain an adventure playground...
- Also a BMX/ Bike dirt track (there was one before). Only way to provide facilities for all sectors of community.
- Will there be an EIA? (Environmental Impact Assessment) or SEA (Strategic Environmental Assessment) for the plans as a whole?
- More places for teenage activities
- Any proposal for quiet / reflective / spiritual area?
- Consider a hands-on sports museum - v. successful in USA
- Must be clear assessment of use, removal, disposal of demolition debris.

## **TIMETABLE**

- May need to more than one planning application for various projects
- NSC brief: may need to include some of surrounding area in design competition
- Major works wouldn't start until 2008

## **MUSEUM**

- Museum met with LDA last month
- Looking to discuss further with CPF
- Museum haven't met with the TG (TG were keen to meet)
- Must be run by an organisation that is constituted democratically so that it can be like other community organisations
- CPF won't participate in dialogue until the trust is more democratic
- New museum is in LDA scheme, so keen for dialogue to improve
- Trust must recognize its need to be loyal to people of CP
- John G. meeting the trust on behalf of CPF next week

## **PARK MANAGEMENT – OPTIONS**

***A list of park management options was displayed and others were then added.***

- Consortium of up to 5 London boroughs
- LDA
- GLA
- Community-based trust
- LB Bromley
- Private management contract
- Charitable trust
- Existing local community body
- Corporation of London
- Royal Parks / ~~Crown Estate~~ (?) (it was pointed out that CP Park is not crown land – but maybe it could be)
- National Trust
- Lea Valley Park model
  
- Spots + parks probably need to be managed separately, although need to be integrated
- This needs consideration in a later Dialogue meeting
- Ownership depends on what's in the park

## **PUBLIC CONSULTATION**

- See handout for info
- Add Sydenham road show, and South Norwood (?)
- Another in Dulwich or Herne Hill Station?
- And Croydon
- Revenue / cost implications of proposals must be clear during consultation
- Publicity needs to be much better
  - Adverts + posters + leaflets
  - Info to take away from marquee
- Being managed by Central Office of Information, not LDA directly
  - Need to focus on local media contacts
- Info needs to be passed to NSC (leaflets)
- Banners / posters must show website
- Marquee will end at dusk each day
- Considering how questionnaire in marquee can be more “open” for public to see the comments
- Balance to be struck in questionnaires between narrowing choices or widening them
- Shame it couldn't happen in summer
  - Timetable prevented this happening
- Questionnaire must allow plenty of open opportunity for comment

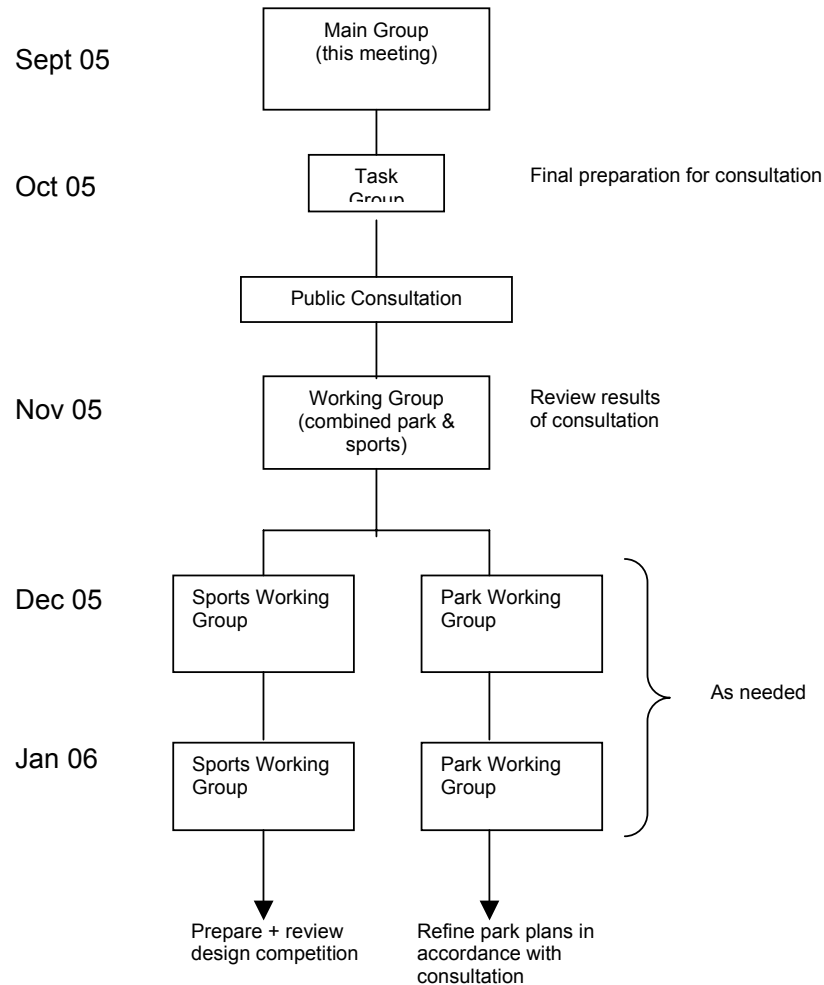
## **PRESS RELEASE**

***A draft press release was displayed and discussed. This is shown below, along with the amendments that were requested.***

- Ideas / options, not proposals
- Westow Street
- “Within the dialogue process”
- “A range of options will go on display”
- Add dates + info of consultation

- Drop “eco warrior” word ... “activist”
- Drop penultimate sentence
- “1 or 2 areas of disagreement” is technically correct but also disagreement over principles e.g. residential
- Add “50m pool”
- Subject to planning approval
- Need to give a flavour of some of the options under discussion, to entice people to the consultation, inc. housing / residential
- Last sentence...”public visit”

## FUTURE DIALOGUE/CONSULTATION PROCESS



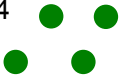





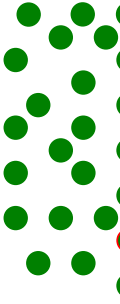
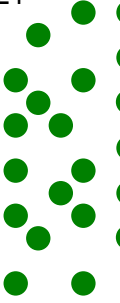
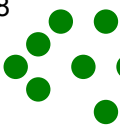
- Could reconvene Main Group in Dec / Jan to review consultation output
- How else will Main Group know about the consultation output?
  - o Need to communicate at a meeting


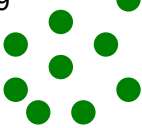

Plan for a MG meeting, but review if needed later... either way Working Groups will update whole MG. Reconstitute the Working Groups to review the consultation output initially.

- Nearly everyone here today (at the end of the meeting) feels broadly happy with consultation arrangements
- One or two couple do not

## SMALL-SCALE IMPROVEMENTS

***The LDA announced that it had a budget of £300,000 per year over the next few years, for small scale improvements to the park. A list of possible items was displayed and participants were given two sticky dots each, with which to indicate their preferences.***

Phased removal of fences around lakes	4 
Remove fences east side of Area 1	
Oak Tree planting	5 
Arts + events programme	3 
Support "Friends of CPP" with funding for a community event	6 
Creating appropriate access to the conservation area near Penge Gate	2 
Repair to original railings on Parade	2 
Subway: site clearance + provide safe access  <b><i>The dots in this section included one red one (although no red dots were supplied to participants) which may indicate one person's opposition to this idea).</i></b>	24 
Top of park (site B): Clear fly tipping and make accessible	21 
Top of park: provide children's play equipment	8 

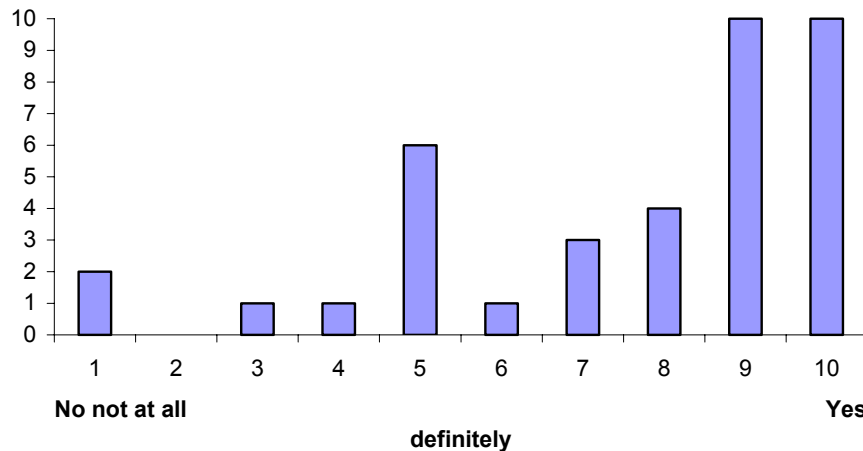
Farm – Paxton Fountain: upgrade to water feature	7 
Concert platform: provide equipment and infrastructure to enable regular events to be staged	9 
Concert platform: replace stage deck	2 

## ACTIONS

ACTION	WHO	WHEN
Make sure Nick G is on mailing list	TEC	
Add John Payne's letter, and NWA/TEC response to report	TEC	
Check MG reports are all on LDA website	LDA	
Put up all TG reports on to LDA website	LDA	
Put together a list of what could change for the consultation + the area that could change for the consultation + the area that will change ( <i>i.e. calculate and communicate details of how much land would become available or be used within each gateway option, both in net and gross terms</i> )		
Consider World Heritage Site designation	LDA	
Put consultation handout in report	TEC	
Compile additional option for Norwood Gate, with bus station moved	LDA	
Send out updated public consultation handout with "dusk" correction	LDA	

## Appendix 1 Evaluation

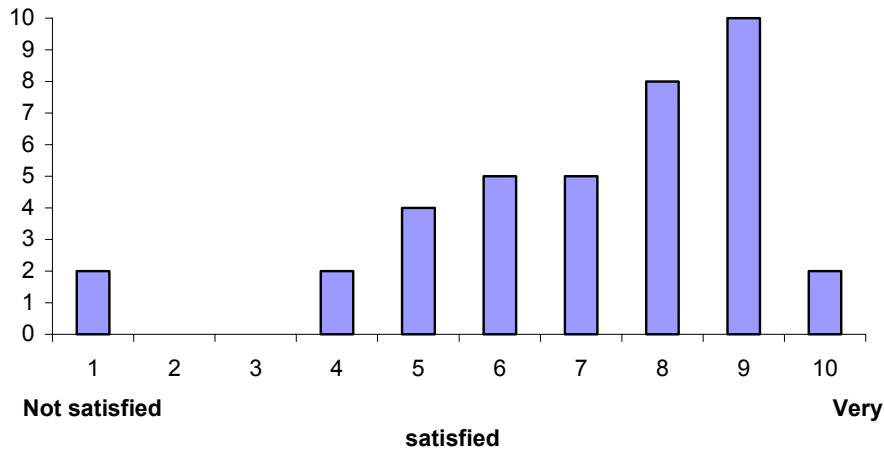
### 1. Are the options and proposal discussed today the right ones to ask the public about?



### Comments

- The proposal is comprehensive. It incorporates the main requirements identified in the consultation. The core principles are good. It will result in a great park and sports centre. Need to provide park facilities for young people.
- No mention of some of the 3<sup>rd</sup> party proposals for the park e.g. butterfly house, norwood society, p kolvin's structure, etc, ray hall, rebuild CP, do nothing.
- They require public input
- Don't think I can answer this –seems ok to me
- Without clear explanation in advance as to whether Crystal Palace Estate is to revert to being a pleasure ground or treated in future as a comprehensive public park, and a clear indication as to the management machinery envisaged, observations regarding redevelopment proposals are meaningless!
- Need more options
- These are valid options but concerns that the side implications will not be clear
- They provide a wide range of possibilities
- Open discussion on all aspects of proposals should be sacrosanct
- They have come from the distillation of a lot of talk and debate going back more than 3 years founded in several public consultation efforts
- Development to support the park has always been necessary e.g. multiplex. No top site development is exciting news. Gateway development in keeping with the park is therefore necessary
- It is as comprehensive a list of options for the future of the park as I can think of
- They include most aspects of
- 200+ house units on the park was never a suggestion by the public or main group – indeed it was rejected. Housing is incompatible with the Park's Metropolitan Open Land status (like Green Belt). Insufficient options i.e. only one – building houses to fund improvements
- Need further options. All options need detailed information on the impact to the environment and to the community of each proposal
- It all depends on how you ask the public. There are ways to get the answers you want by manipulation
- Missing implications and largely missing options
- Need a proposal for wildlife area on top site
- Because they offer an exciting and coherent plan to transform an embarrassing dump into a great regional asset

**2. How satisfied are you with the process of dialogue and arrangements for public consultation?**

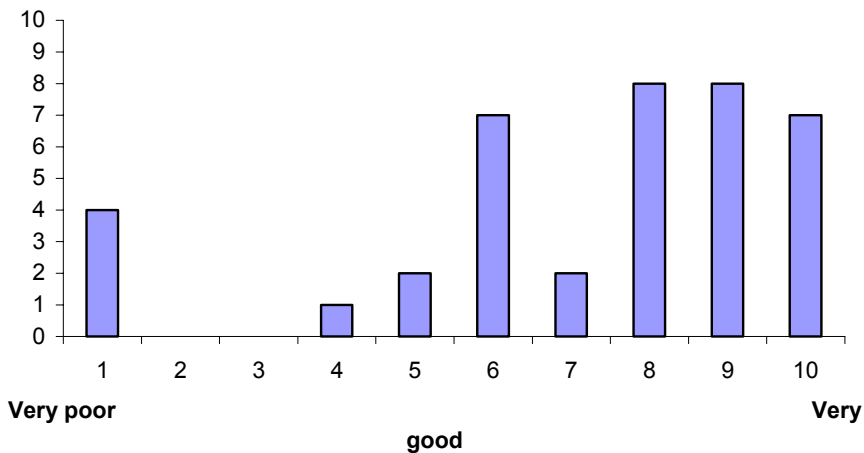


**Comments**

- Need to provide full details in a clear way for public consultation. Details of proposed sports centre facilities, recycling facilities, viewing platform
- More information is needed in the public domain. We need a public meeting with public discussion
- So far so good
- Consultation in Whitgirt Centre needs to be put back on the plan
- PA must be well advertised in local area – especially posters
- A concern that there are decisions made that are not influenced by the consultation
- More advertising of local meetings is required – local press?
- Venue – sound quality poor, refreshments excellent
- I would have liked as a representative of the Friends of CP Park, to have been involved in the full dialogue process
- There still lies 'mistrust' in system. Main Group still do not appear to be coming to set agreement to take to public!!
- No advance reports – spur of the moment 'focus group'. Decision making – poor decision. Insufficient debate. Insufficient options. Implications of options not revealed
- Advertising the public consultation must be much better advertised than last time
- For the reasons above (it all depends on how you ask the public. There are ways to get the answers you want by manipulation)
- Need a major public meeting



**3. How would you rate the performance and role of the facilitation in the process?**



**Comments**

- Keep up the good work!
- Good, but appears to be rationising to a few proposals rather than inspiring public with range of ideas
- Need to do door to door leafleting to reach everyone. Not just people who use park now or the shopping area. Perhaps need the improvements to encourage people into the park
- Pretty good, but some personal agendas get too much air time, e.g. tramlink route
- Nigel should move, shout.....motivate!
- The meetings are well run
- As above
- Listened to what everyone had to say, allowed very many questions, moved the process along positively
- It is the nature of the beast that all who would have something to say are cut off
- Even handedness, better focus on meeting objectives, prevention of domination by vociferous individuals
- Very difficult task to demonstrate independence from LDA
- Generally good, but some present were allowed far too many chances to speak and this stifles contribution from those less accustomed to public speaking
- There were various 'doubts' about facilitators independence
- Resultant option is LDA led not public led. Insufficient notice. No advance reports. Sound-bite group decision making. Insufficient debate. Failure to advertise minutes/options on website.
- A difficult role, due to the strong feelings and history to the future plans of the park
- Too much leeway is given to those who've already spoken and the questions keep coming and strict time limit is set
- Not strong enough
- Was not dynamic enough
- Has become adept at managing the element of bloody mindedness

**4. Any other comments or feedback**

**Comments**

- There is a need to show what the impact would be if the housing proposed was reduced or eliminated. Need to show cost estimates and funding and revenue. Need to get input from young people, ethnic communities

- Public consultation vs. public discussion. The public and business community are largely unaware of all the possibilities and how the dialogue process has distilled some of the down
- Will people ever see that it will require housing to support funding
- Could one think of a way to ration some of the comments people make?
- Everyone's patience has been very good indeed
- I wonder if this 'main group' is being used as a sounding board by LDA to determine how it should frame its own favoured option to ensure it succeeds – how to frame a proposal for housing on the park such that it generates minimum resistance.....
- Museum is calling the shots too much
- Too much time wasted (once again) at beginning of meeting – always leads to a negative feeling in the hall
- Always interesting, but sometimes suggestions are not practicable. Also we must keep to the agenda strictly and not waffle
- The legal basis and ongoing role of GLA and/or LDA involvement – both in the short and long term – have never been clarified, bearing in mind that the GLA is not an open space authority. Also, no consideration has been given to the quota of affordable housing currently applied to housing development proposals, in working out the economics of 'enabling' housing, etc.
- Well done!
- Thanks to the catering staff
- This meeting has been much more positive
- Important to keep the momentum of the process going
- Well done. But I still have a suspicion that the powers that be will do what they want eventually
- Some of those present were lacking in self-discipline and courtesy when it came to allowing debate
- LDA's proposals have good and thought out in full but Main Group still appear not to have general agreement to take to public in proposals
- If the answer is building houses/flats/offices/shops on parkland – it must have been a stupid question
- Unable to explain right now
- There is a sense of scepticism when such procedures are in progress. There is no easy way to see any improvement in the process
- Lunch – not enough onion bhaji
- Very good there is now a strong positive consensus around what happens to NSC (i.e. demolition and replacement with a state-of-art regional facility)
- This feels a frustrating process but worth sticking with if only to temper the final decisions